

# MONTHLY MEMBERSHIP PROGRESS REPORT

LOCATION INDIA

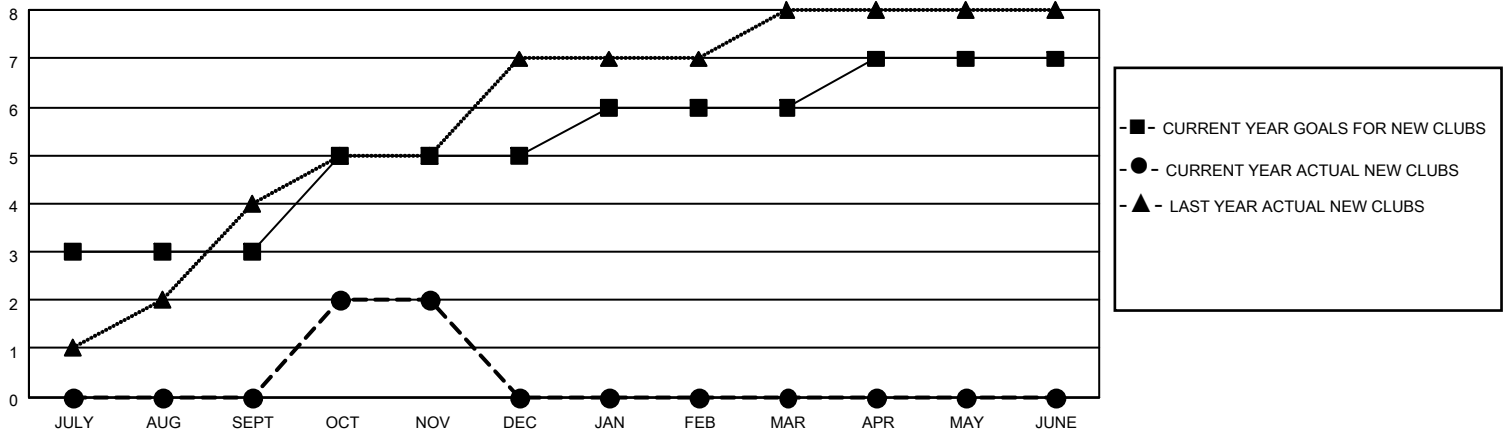
District 320 E

Results as of: 11/30/2021

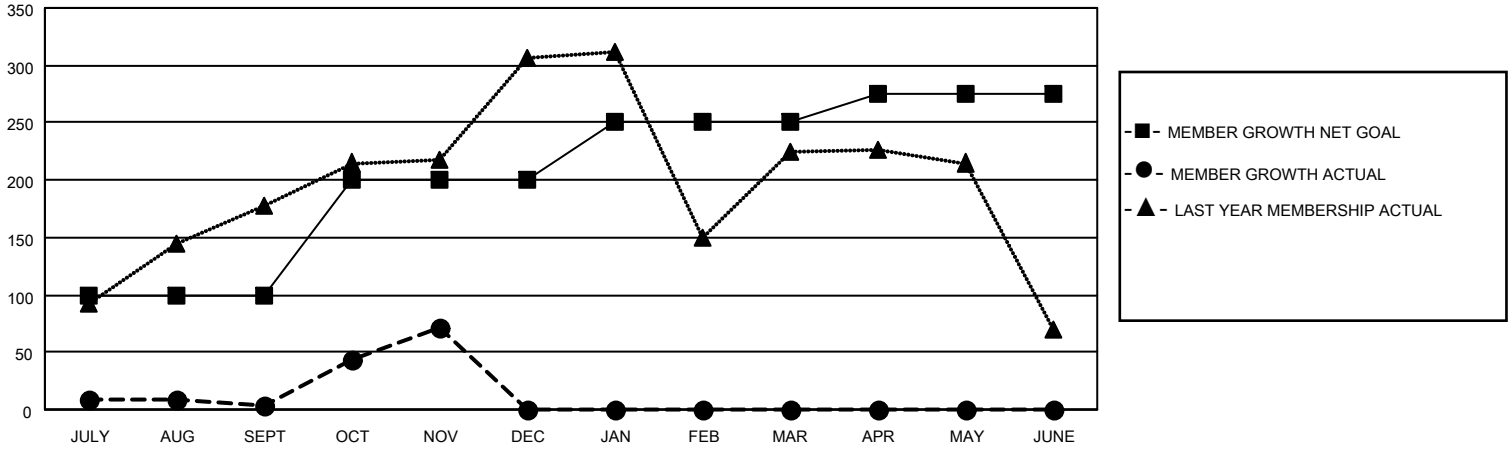
Clubs			
RESULTS FOR 2021-2022			
QUARTER	NEW CLUB GOAL	NEW CLUBS	DROPPED CLUBS
JULY/AUG/SEPT	3	0	1
OCT/NOV/DEC	2	2	0
JAN/FEB/MAR	1	0	0
APR/MAY/JUNE	1	0	0

Members			
RESULTS FOR 2021-2022			
QUARTER	MEMBER GROWTH NET GOAL	MEMBER GROWTH ACTUAL	DROPPED MEMBERS ACTUAL (including transfers)
JULY/AUG/SEPT	100	125	111
OCT/NOV/DEC	100	97	28
JAN/FEB/MAR	50	0	0
APR/MAY/JUNE	25	0	0

**GOALS AND ACTUAL NEW CLUBS CUMULATIVE**



**GOALS AND ACTUAL MEMBERS CUMULATIVE**



**DROPPED CLUBS: 1**

**29 CLUBS OF 69 ADDED 1 OR MORE NEW MEMBERS**

**GENDER DISTRIBUTION**

**DROPPED MEMBERS**

DECEASED	7
CLUB CANCELLED	5
OTHER	127
<b>TOTAL</b>	<b>139</b>

[CLICK HERE FOR CUMULATIVE MEMBERSHIP DATA](#)

MALE	2,136 (70.33%)
FEMALE	901 (29.67%)
NON BINARY	0 (0.00%)
PREFER NOT TO ANSWER	0 (0.00%)

TOTAL FAMILY UNIT MEMBERS 2,157

FAMILY MEMBERS PAYING HALF DUES 1,324